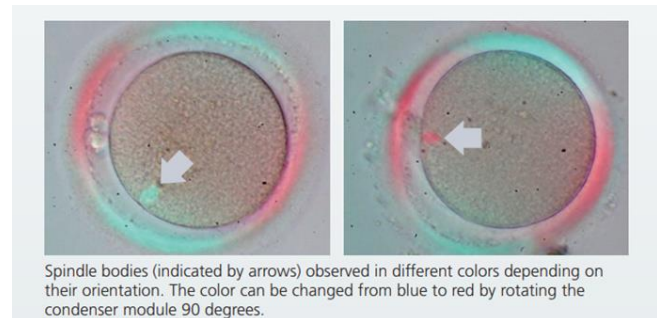
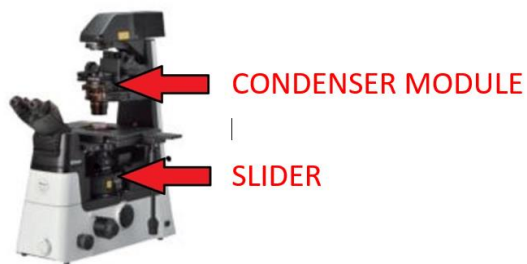


Spindle Observation System for Nikon Eclipse Ti2, Ti a TE2000 and Diaphot 200/300 Series.

The image of the spindle can be seen with the naked eye in the eyepieces, for documentation it is possible to use any (even existing) camera, which has a true color display. We will be happy to send you an offer for a camera on request. The spindle can be colored blue or red, depending on the orientation toward the polarized light. At the same time, the color change from red to blue as the spindle rotates indicates that it is indeed a spindle, not an artifact. Petri dishes with a 0.17 mm glass bottom must be used for observation. Below is a diagram of the arrangement of individual elements of the system. Heated plates can be used either with glass (ideally 0.5 mm thick) or metal with a hole.



Code	Description	Pcs.	Unit Price EUR	Discount %	TTL Price EUR
1	MXA22164 TS2R-C-SO Spindle Observation System <i>Slider and Condenser Module</i>	1	5 483,00	0,0%	5 483,00
2	AD-SLIDER-... Adapter for pro slider for Ti2/Ti/TE2000	1	290,00	0,0%	290,00
Price w/o VAT					5 773,00
3	MEN51942 TC-C-DICP DIC pull-out polariser <i>Not necessary for Ti2 microscopes, but simplifies module handling and allows easy and safe ejection of the polarizer from the optical path Required for Ti and TE2000 microscopes</i>	1	1 208,00	0,0%	1 208,00
4	AD-CMOD Adapter for Condenser Module <i>Not necessary in case of use of TC-C-DICP polariser.</i>	1	290,00	0,0%	290,00
Price w/o VAT					1 498,00
<i>Lenses recommended by Nikon</i>					
5	MRH68200 CFI S Plan Fluor ELWD NAMC 20XC N.A.0,45 W.D.7,4mm Coverglass Correction 0-2,0mm	1	3 763,00	0,0%	3 763,00
Price w/o VAT					3 763,00
6	MRH68400 CFI S Plan Fluor ELWD NAMC 40XC N.A.0,6 W.D.3,1mm Coverglass Correction 0-2,0mm	1	4 372,00	0,0%	4 372,00
Price w/o VAT					4 372,00
7	MRP05422 CFI Achromat LWD 40X C N.A. 0.55, W.D. 2.7-1.7 mm	1	1 780,00	0,0%	1 780,00
Price w/o VAT					1 780,00

Any other objective lenses are possible to use.