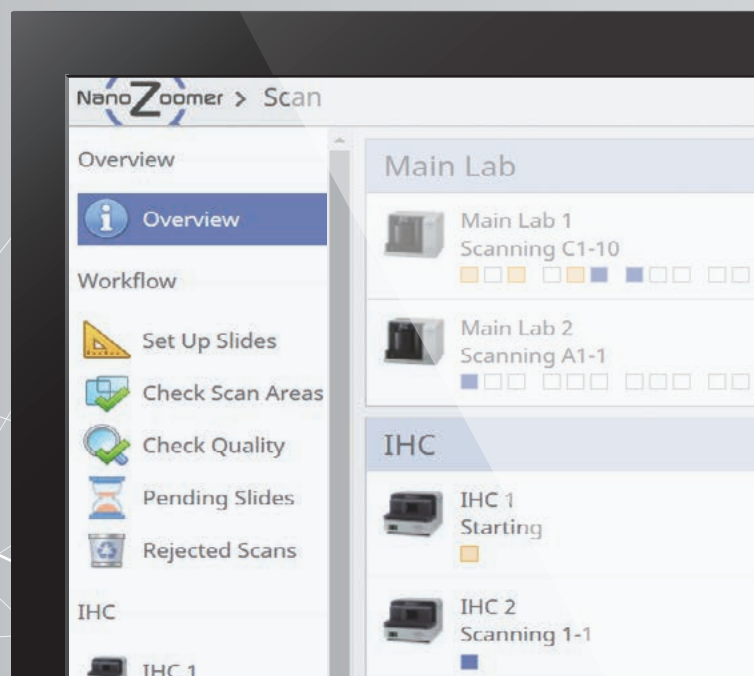


# NZConnectMD Scan

Image acquisition server software

U16414-21MDEU

Connected, scalable NanoZoomer® MD series management software



Control Multiple NanoZoomer MD Series Scanners

Space Optimization

Remote Operation

Audit Trail

Online Quality Check

Barcode Control

Control and monitor multiple scanners via a unified web-interface.

Reduce physical footprint by removing separate workstations for each NanoZoomer.

Operate remotely and check scanner status from any location.

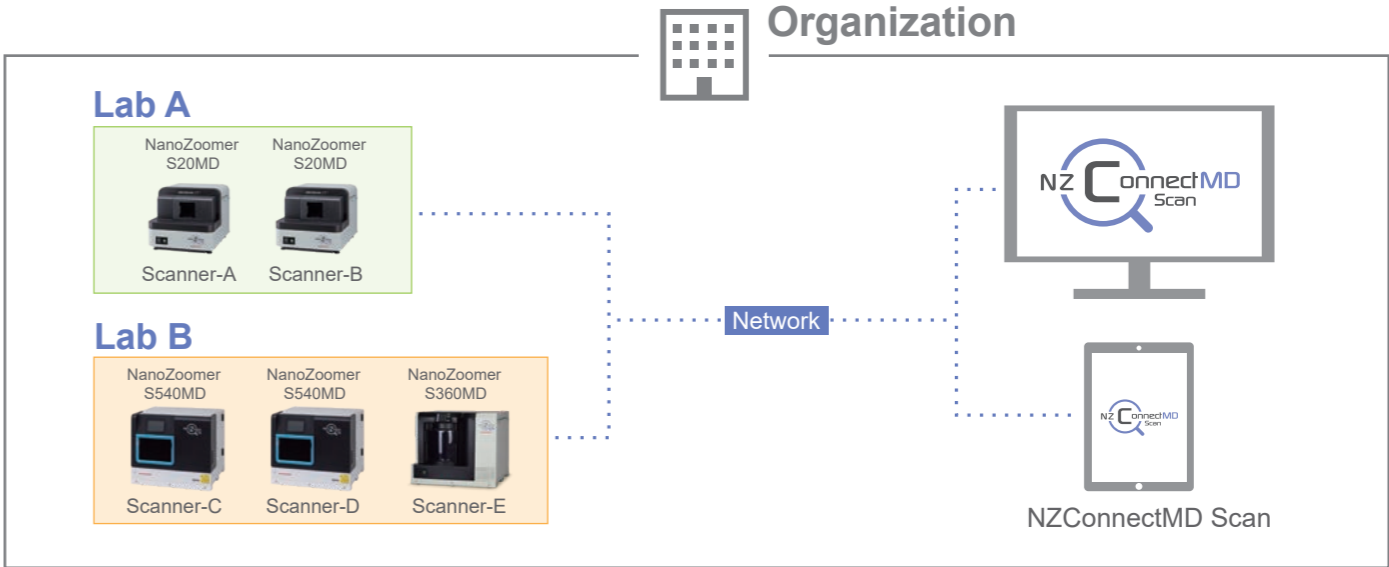
Manage and trace event logs for individual slides and users.

Perform remote QC, anywhere, anytime.

Automatically select scan settings based on barcode information.

# Optimizing Digital Pathology Workflow with Centralized Scanner Management

NZConnectMD Scan allows seamless management and operation of multiple NanoZoomer MD series scanners (S540MD, S360MD, and S20MD) from any authorized users on a networked computer. As a web-based application, it supports simultaneous access by multiple users across the network, ensuring efficient collaboration and streamlined workflows. With an integrated audit trail for enhanced traceability, NZConnectMD Scan delivers advanced control and oversight, setting a new standard for Digital Pathology System management.



<p><b>User</b></p> <ul style="list-style-type: none"> <li>Scan Technologist</li> <li>Pathologist</li> <li>Lab Manager</li> <li>Administrator</li> </ul>	<p><b>Slide Loading</b></p> <ul style="list-style-type: none"> <li>Slide loading</li> </ul>	<p><b>Scan Operation</b></p> <ul style="list-style-type: none"> <li>Scan operation</li> </ul>	<p><b>Quality Check</b></p> <ul style="list-style-type: none"> <li>Status check (Blank slot check / scanning)</li> <li>Quality check</li> </ul>	<p><b>Diagnosis</b></p> <ul style="list-style-type: none"> <li>Pathology diagnosis</li> </ul>
	<ul style="list-style-type: none"> <li>Audit trail</li> </ul>	<ul style="list-style-type: none"> <li>Status check (Entire workflow)</li> </ul>		
	<ul style="list-style-type: none"> <li>Server admin</li> <li>User management</li> </ul>			

**Space Optimization**

Save space in the lab by performing scan setup, status checks, and QC in one web-based application for all of your scanners.

Not needed PC display    NanoZoomer MD series    NZConnectMD Scan

\*For more details, refer to the system configuration on the back.

**Barcode Driven Workflow**

- Automatically select scan profiles based on slide barcode.
- Freely move slides between scanners without re-registering.
- Flexibly route slide images to any network destination.

**Auto/Manual Remote Scanning**

- Freely mix slides for scanning in semi-automatic and fully-automatic modes.
- Maintain control of scan settings in automated workflows, with the ability to adjust pre-applied settings.

**Quality Check Management**

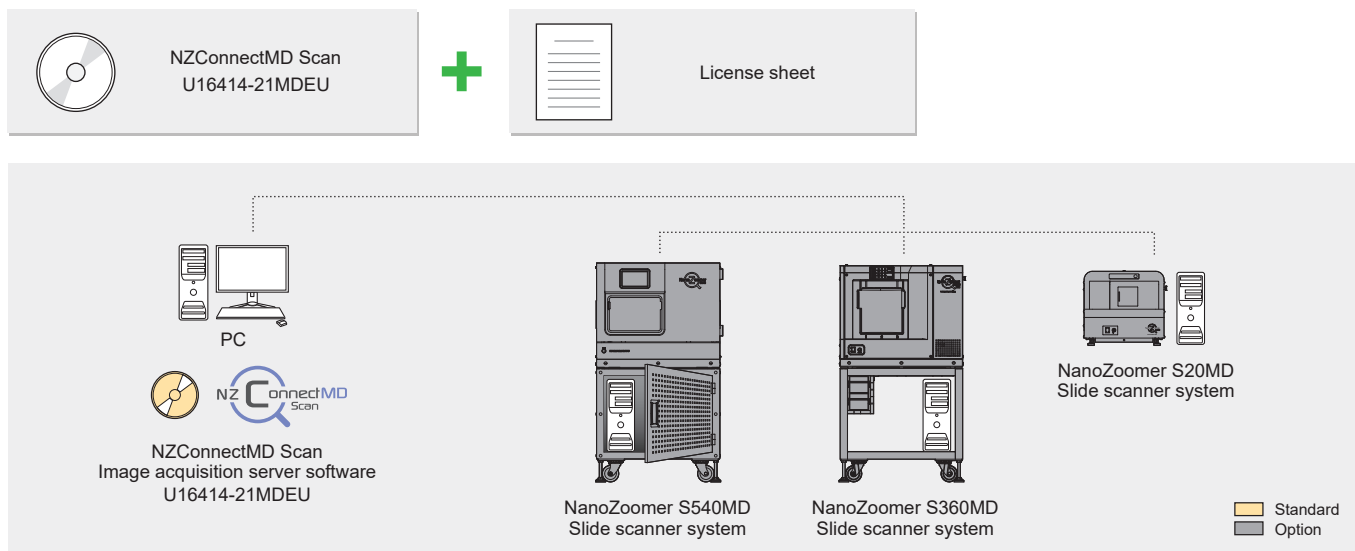
- Easily locate slides by scanning their barcode with a hand-held reader.
- Use automated QC to check slides needing attention, with customizable focus score thresholds.
- Use area check function to confirm scan areas on multiple slides at once.

**Web-based Image Management**

- Seamless integration into NZConnectMD Serve for simple image viewing.
- Key features of NZConnectMD Serve include an intuitive interface, simple data management, synchronized viewing, LDAP support, and regulatory compliance.

Option

## System configuration



## System requirements

Product name	NZConnectMD Scan Image acquisition server software
Product number	U16414-21MDEU
Type of computer	PC-AT compatibles
OS	Windows® Server 2022, Windows Server 2019, Windows Server 2016
CPU	Xeon 2.8 GHz or more
Memory	16 GB or more
Available HDD space	50 GB or more
Drive	DVD-ROM Drive
Screen resolution	1024 × 768 or higher
Database management system	Microsoft SQL Server 2016 Express with Advanced Services / Standard (64 bit) Microsoft SQL Server 2017 Express with Advanced Services / Standard (64 bit) Microsoft SQL Server 2019 Express with Advanced Services / Standard (64 bit) Microsoft SQL Server 2022 Express with Advanced Services / Standard (64bit)

## Operating environment

Compatible devices	Compatible OS	Supported browser
Windows PC	Windows 10 Including Touch panel	Microsoft Edge, Google Chrome, Mozilla Firefox
	Windows 11	
	Windows server 2022 Windows server 2019	
Mac	Up to macOS Ver. 15 Sequoia	Up to Safari Ver. 18
iPad	Up to iPadOS Ver. 18	

\* Please refer to the website for the latest supported OS and browsers for each device.  
<https://www.hamamatsu.com/eu/en/product/life-science-and-medical-systems/digital-slide-scanner-for-medical/U16414-21MDEU.html>

## Intended Use

NZConnectMD Scan software is designed to give you the flexibility to scan, host, and view NanoZoomer digital images remotely over the Internet as well as your internal network. The server software is designed to:  
 Intuitive and easy to use, it allows for quick slide hosting and user management.

- NanoZoomer is a registered trademark of Hamamatsu Photonics K.K. (EU, Japan, UK, USA).
- Windows is a registered trademark of Microsoft Corporation in the USA.
- The product and software package names noted in this brochure are trademarks or registered trademarks of their respective manufacturers.
- Subject to local technical requirements and regulations, availability of products included in this brochure may vary. Please consult your local sales representative.
- The product described in this brochure is designed to meet the written specifications, when used strictly in accordance with all instructions.

©2025 Hamamatsu Photonics K.K.

## HAMAMATSU PHOTONICS K.K. [www.hamamatsu.com](http://www.hamamatsu.com)

### Manufacturer

#### HAMAMATSU PHOTONICS K.K., Systems Division Joko Factory


812 Joko-cho, Chuo-ku, Hamamatsu-City, Shizuoka-Pref.  
 431-3196, Japan  
 Telephone: (81)53-431-0124, Fax: (81)53-433-8031  
 E-mail: [export@sys.hp.k.co.jp](mailto:export@sys.hp.k.co.jp)

### Authorised representative

#### HAMAMATSU PHOTONICS DEUTSCHLAND GMBH

 Arzbergerstr. 10, 82211 Herrsching am Ammersee, Germany  
 E-mail: [pms-med@hamamatsu.eu](mailto:pms-med@hamamatsu.eu)

#### HAMAMATSU PHOTONICS UK LIMITED

 2 Howard Court, 10 Tewin Road, Welwyn Garden City,  
 Hertfordshire, AL7 1BW, UK  
 E-mail: [pms-med@hamamatsu.co.uk](mailto:pms-med@hamamatsu.co.uk)

#### HAMAMATSU PHOTONICS FRANCE S.A.R.L. Swiss Office

 Dornacherplatz 7, 4500 Solothurn, Switzerland  
 E-mail: [swiss@hamamatsu.ch](mailto:swiss@hamamatsu.ch)

### Importers

#### HAMAMATSU PHOTONICS DEUTSCHLAND GMBH

Arzbergerstr. 10, 82211 Herrsching am Ammersee, Germany  
 Telephone: (49)8152-375-0, Fax: (49)8152-265-8  
 E-mail: [info@hamamatsu.de](mailto:info@hamamatsu.de)

#### HAMAMATSU PHOTONICS FRANCE S.A.R.L.

19 Rue du Saule Trapu, Parc du Moulin de Massy, 91882 Massy Cedex, France  
 Telephone: (33)1 69 53 71 00, Fax: (33)1 69 53 71 10  
 E-mail: [infos@hamamatsu.fr](mailto:infos@hamamatsu.fr)

#### HAMAMATSU PHOTONICS FRANCE S.A.R.L. Swiss Office

Dornacherplatz 7, 4500 Solothurn, Switzerland  
 Telephone: (41)32 625 60 60, Fax: (41)32 625 60 61  
 E-mail: [swiss@hamamatsu.ch](mailto:swiss@hamamatsu.ch)

#### HAMAMATSU PHOTONICS NORDEN AB

Torshamnsgatan 35 16440 Kista, Sweden  
 Telephone: (46)8-509 031 00, Fax: (46)8-509 031 01  
 E-mail: [info@hamamatsu.se](mailto:info@hamamatsu.se)

#### HAMAMATSU PHOTONICS ITALIA S.R.L.

Strada della Moia, 1 int. 6, 20044 Arese (Milano), Italy  
 Telephone: (39)02-93 58 17 33, Fax: (39)02-93 58 17 41  
 E-mail: [info@hamamatsu.it](mailto:info@hamamatsu.it)